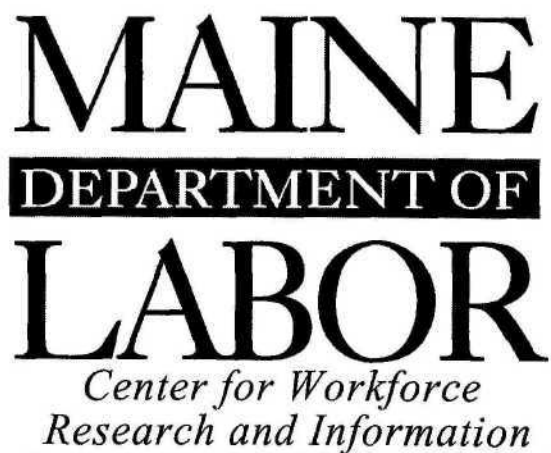


Labor Market Update

Presented to the

Central/Western Workforce Investment Board

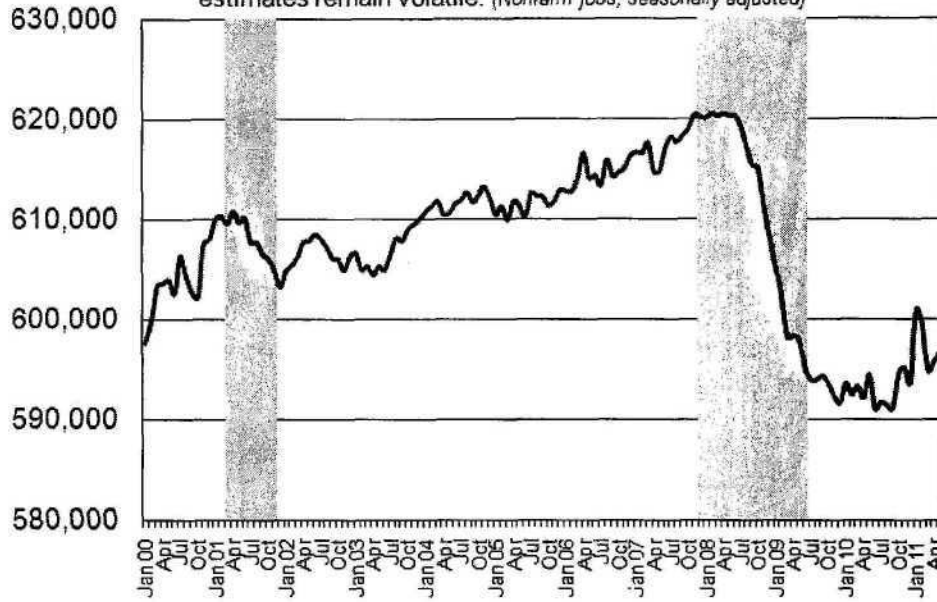
June 17th, 2011



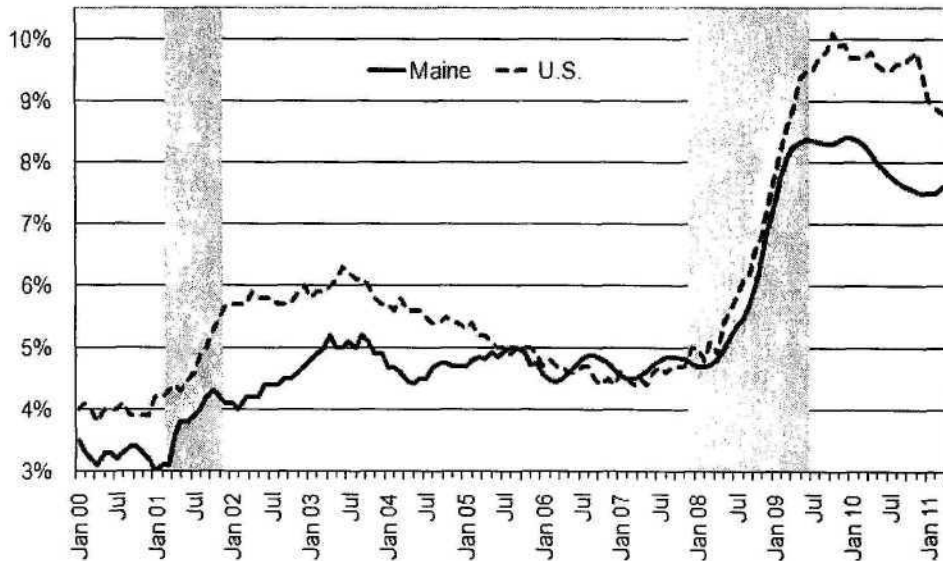
Ruth Pease ruth.e.pease@maine.gov 621-5189

CURRENT CONDITIONS

Maine lost about 30,000 nonfarm jobs from the start of the recession through 2009. Conditions moderated in 2010. Jobs have trend up over the past few months, however monthly estimates remain volatile. *(Nonfarm jobs, seasonally adjusted)*

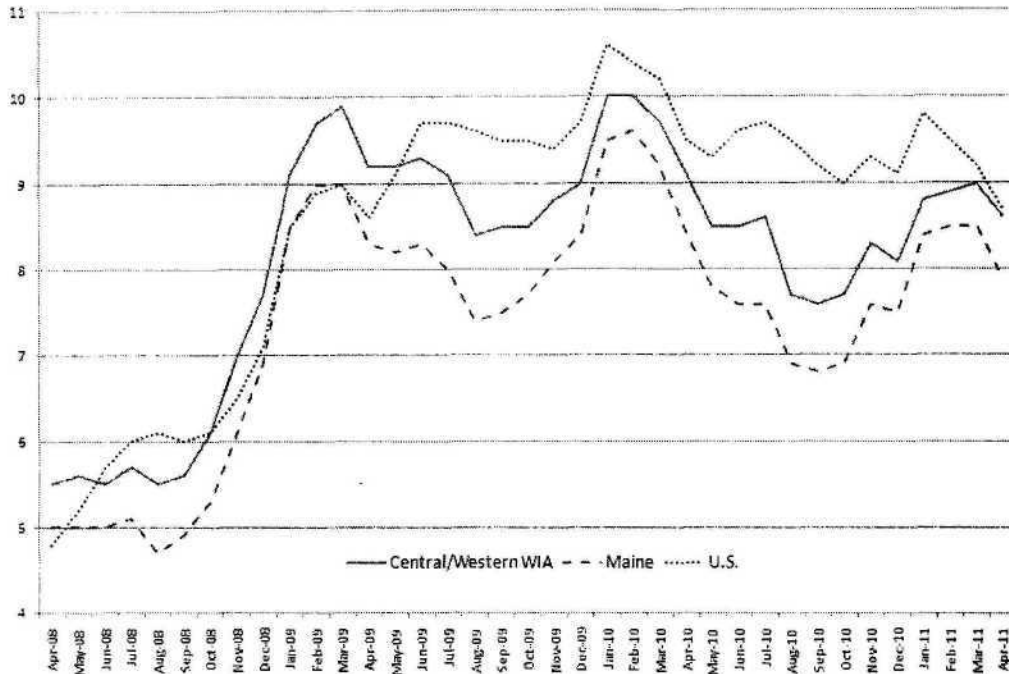


The combination of a lower rate of job loss and slower population growth held Maine's unemployment rate below the national average since 2008 *(seasonally-adjusted)*

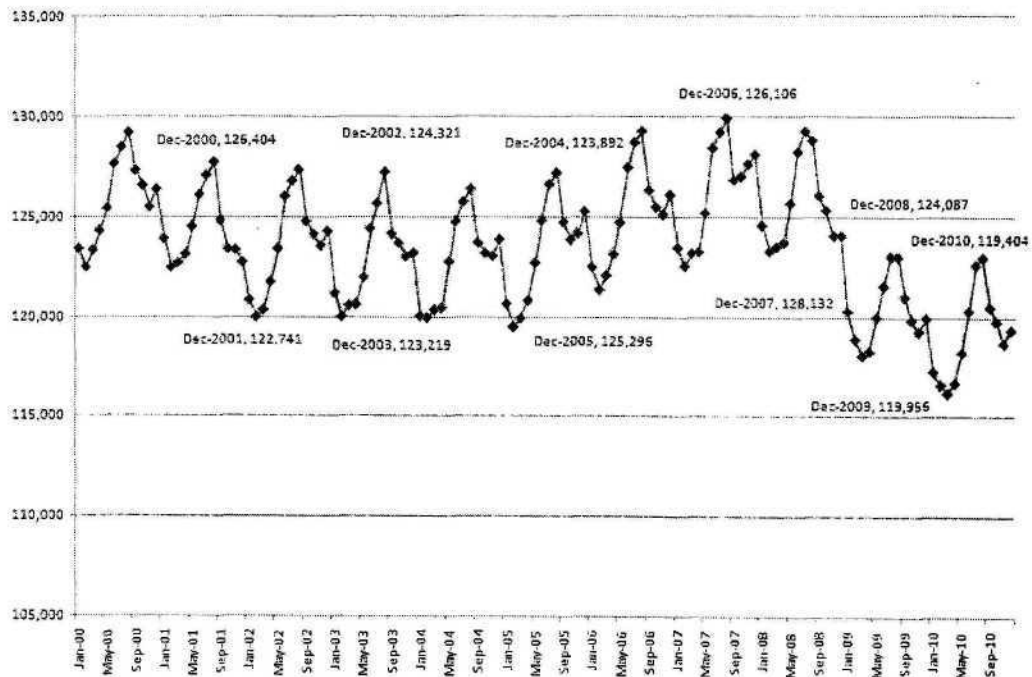


Monthly Unemployment Rates, April 2008 to April 2011

Not Seasonally Adjusted



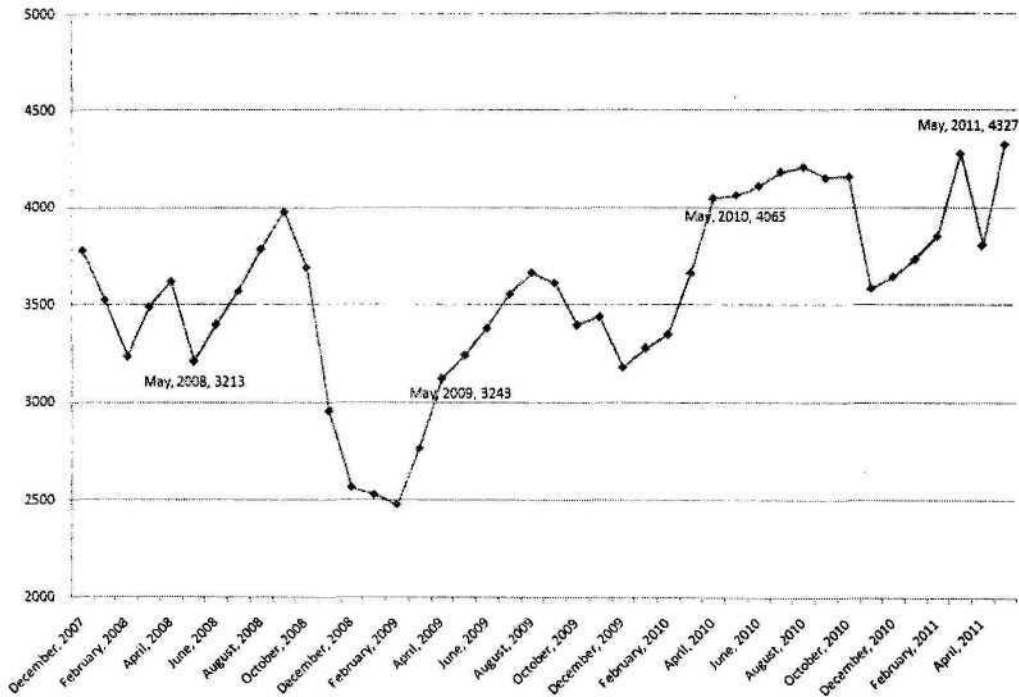
Between December 2007 and December 2010, the Central-Western WIA lost nearly 7 percent of private sector jobs, compared to 5.5 percent statewide



REAL-TIME DATA

Database of on-line job postings
 More than 1,200 on-line sources
 Indicates jobs and skills in current demand

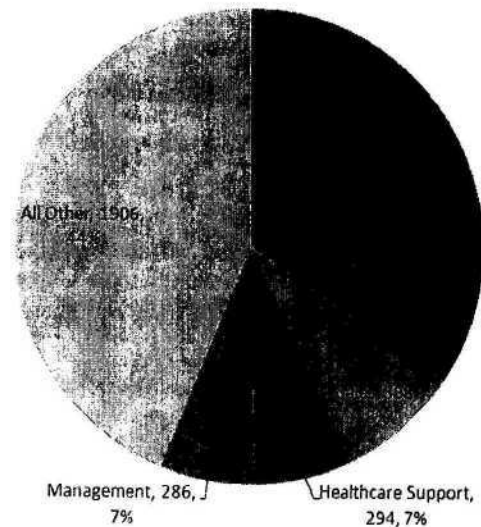
Job Postings in the WIA have improved since the end of the recession



May 2011 Postings

- 28% in health-care related occupations
- More than one-half require post-secondary education or training

**Job Postings in the WIA by Occupational Group
 May 2011**



Using real-time data in combination with other data:

Supply/Demand Rate: ME

An indicator developed by the Conference Board
Number of unemployed/Number of job postings
(seasonally adjusted)

